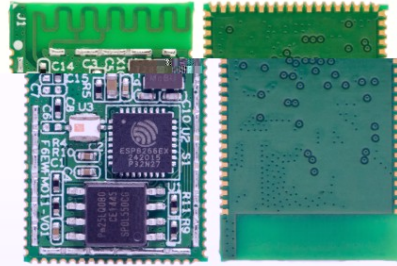


FLC-WFM011



概述：

FLC-WFM011是一款高集成度、低功耗的无线通讯模组，专为物联网市场设计。支持802.11b/g/n、WiFi Mesh，并集成了TCP/IP网

Description:

FLC-WFM011 is a highly integrated and low energy wireless communication module, especially developed for IOT market. The

技术规格：

Technical Specification:

- ④支持WIFI Mesh
- ⑤支持天线分集，PCB板载天线与外置天线
- ⑥深度睡眠电流小于10uA，关断电流小于5uA
- ⑦2ms之内唤醒、连接并传递数据包
- ⑧待机状态消耗功率小于1.0mW (DTIM3)

- ④Support WiFi Mesh
- ⑤Support antenna diversity, PCB on-board antenna and Built-out antenna
- ⑥The deep sleep current is lower than 10uA, and the turnoff current is less than 5uA
- ⑦It can wake, connect and transmit data packet in 2ms
- ⑧Under the standby state, the power consumption is less than 1.0mW (DTIM3)

- ⑨802.11b模式下+20dBm的输出功率
- ⑩小尺寸，易于集成到空间受限的产品设计中

- ⑨With an output power of +20dBm under the mode of 802.11b
- ⑩ Security support: WPA/WPA2 security mode

ADC	10bit高精度ADC
PMW	4 PMW output interfaces
IR	红外遥控接口
GPIO	7个可编程IO接口

ADC	10bit high-precision ADC
PMW	4 PMW output interfaces
IR	Remote control interface
GPIO	17 programmable IO interfaces

- ◆ 电压：3.0V-3.6V
- ◆ 工作温度：-40°C to +85°C
- ◆ 包装：
 - ①方式：QFN封装，可靠的PCB板设计
 - ②技术：表面封装技术
 - ③尺寸：15.5mm*22mm*3.66mm（小尺寸，不带包装）

- ◆ Voltage: 3.0V-3.6V
- ◆ Working temperature: -40°C to +85°C
- ◆ Package:
 - ①Type: QFN package, Reliable PCB design
 - ②Technology: Surface mount technology
 - ③Dimension: 15.5mm*22mm*3.66mm (small size, without packaging)

- 应用：
- ◆ 工业无线控制
 - ◆ 智能家居
 - ◆ 可穿戴电子产品
 - ◆ 网络摄像机
 - ◆ 传感器网络

- Application:
- ◆ Industrial wireless controls
 - ◆ Smart home
 - ◆ Wearable Electronics
 - ◆ Web camera
 - ◆ Sensor network