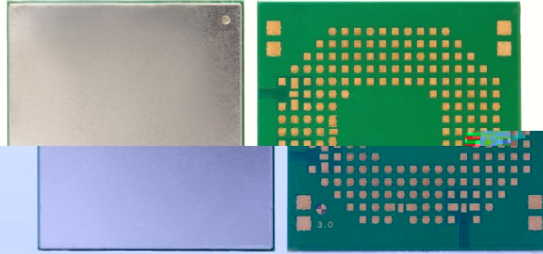


FLC-MCM530



概述：

FLC-MCM530是WCDMA模块，采用3GPP Rel.8技术，支持最大

Description:

FLC-MCM530 is a WCDMA module, using 3GPP Rel.8 technology, supporting maximum

技术规格：

Technical Specification:

		3G	
3G	WCDMA(UMTS)	B5 (1800MHz)	B8 (900MHz)
		B1 (2100MHz)	
		L1 (1575.42MHz)	
GNSS	GPS	L1 (1575.42MHz)	
	GLONASS	L1 (1597.42MHz-1605.8MHz)	

• 内存：LPDDR 2Gb + NAND FLASH 4Gb

• 应用：手机

Type	Standards	Bands
2G	GSM	B8 (900MHz)
		B5 (1800MHz)
3G	WCDMA(UMTS)	B8 (900MHz)
		B1 (2100MHz)
		L1 (1575.42MHz)
GNSS	GPS	L1 (1575.42MHz)
	GLONASS	L1 (1597.42MHz-1605.8MHz)

应用：

Application: