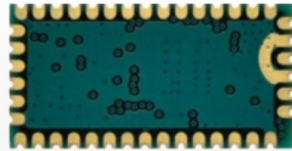


FLC-BTM602



概述：

FLC-BTM602是蓝牙HCI模块，OEM厂商可以通过模块增加蓝牙无线功能到产品中。该模块支持HCI接口，可方便的设计成经过验证的嵌入式蓝牙解决方案。该蓝牙模块是专为汽车应用。该蓝牙芯片组模块中已通过AEC-Q100的可靠性测试。使用慧翰的蓝牙协议栈，设计人员可以轻松地定制自己的应用程序以支持不同的蓝牙协议，如HS / HF, A2DP, AVRCP, OPP, DUN, SPP等，模块支持蓝牙增强型数据速率（EDR），10米距离内支持高达3Mbps的数据传输速率。

优势：

- ◆ PCM / I2S / SPDIF数字音频接口

Description:

FLC-BTM602 is a Bluetooth HCI module that allows OEM to add wireless capability to their products. The module supports HCI interface that makes it simple to design into fully certified embedded Bluetooth solutions. This BT is designed for automotive applications.

The BT chipset in the module of before market version passes the AEC-Q100 reliability test. With FLC's Bluetooth stack running on a host, designers can easily customize their applications to support different Bluetooth profiles, such as HS/HF, A2DP, AVRCP, OPP, DUN, SPP, and etc. The module supports Bluetooth® Enhanced Data Rate (EDR) and delivers up to 3 Mbps data rate for distances to 10 meter.

Advantages:

特点：

Feature:

应用：

Application:

- ◆ 工业控制

Industrial sensor and control